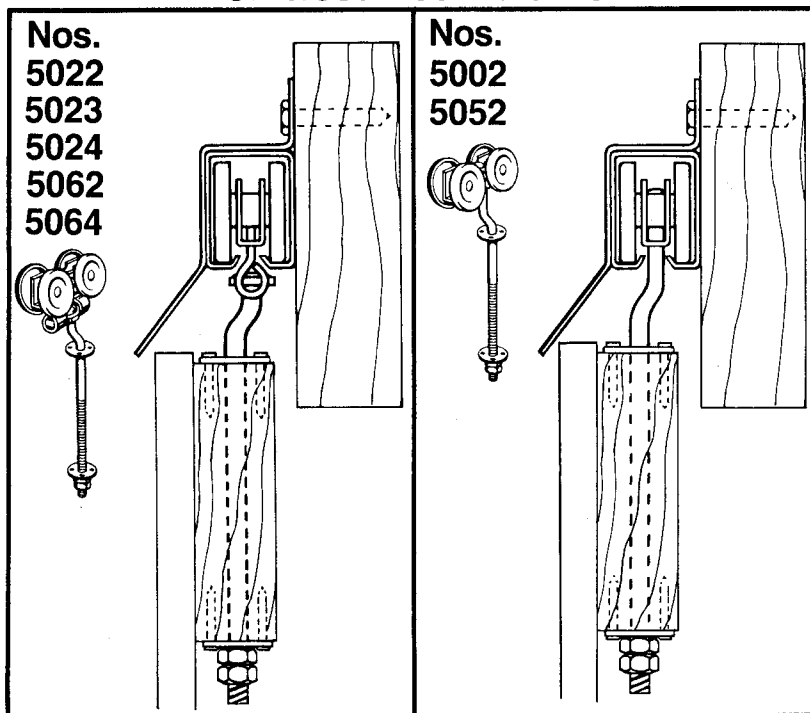
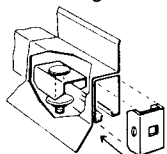


# DIRECTIONS FOR INSTALLING DROP BOLT TROLLEY HANGERS

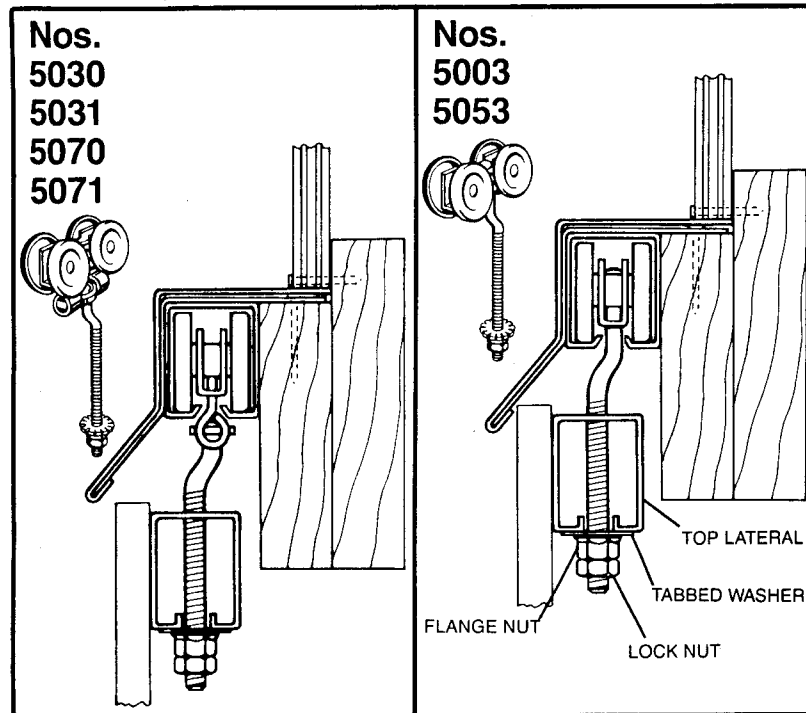
## On Wood Door Laterals



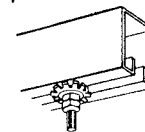
1. Locate hangers to distribute load evenly, minimum 3" from edge of door. (Important — use only 2 hangers per door.)
2. Drill 9/16" hole through 2" x 6" top frame to accommodate bolt.
3. Install flat sided washer (supplied) over top of hole using nails (not furnished) making sure bolt slides freely through washer and hole.
4. Drop bolt through hole and assemble second washer and one nut. Thread nut up on bolt until top of door is approximately 3/4" from bottom of the offset in the bolt.
5. Install door and make final vertical adjustment by raising or lowering nut. Tighten lock nut.
6. To make lateral adjustment, grip the flat sides of trolley drop bolt with a wrench and turn to obtain desired clearance. Then drive nails (not furnished) through holes provided in flat washers. This locks hanger securely in position.
7. Drive end caps inside end of rail for normal application. End caps may also be used as center stops with 3/8" x 2" carriage bolts, not furnished. See illustration.



## On TAB-LOC™ Steel Door Frame



1. Insert trolley drop bolt through prepunched 9/16" hole in top lateral member.
2. Assemble tabbed washer, flange nut, and locknut.
3. Hang door — make vertical adjustment with flange nut and tighten locknut.
4. To adjust door in and out use wrench to turn flat-sided drop bolt to obtain desired clearance.
5. To secure system bend opposite tabs of tabbed washer into slot opening of top lateral.
6. Drive end caps inside end of rail for normal application. End caps may also be used as center stops with 3/8" x 2" carriage bolts, not furnished. See illustration.



**National**

Hardware  
Makers  
Since 1901

National Manufacturing Company  
Sterling, Illinois 61081

Form No. 1610

# 16 Gauge Trolley Rail and Trolley Hangers

Load Carrying Table (In pounds per door panel)

## Delrin 500CL Bearing Hangers

## Steel Roller Bearing Hangers

patent No. 4,642,844

NEW #	5000	5001	5002	5003	5005	5006	5008	5009	5022	5023	5024	5030	5031	5040	5041	5042	5047	5050	5051	5052	5053	5055	5062	5064	5070	5071	5080	5087	
OLD #		1050T			1050	5158	1054	853	5148	1052R	5149	6010	6011	1051	1052	1053			1060T			1060	1062	5162	6015		1061		
59					450					450				450		450						450						450	
5100			450	450					450		450	450	450								450	450		450	450	450	450		
5103																		600		600	600		600	600	600	600			
5104			450	450					450			450									450	450		450		450			
5105			450	450		450			450			450					450				450	450		450		450			
5110		450			450	450				450				450	450	450	450		450				450					450	
5114																		600	600			600					600	600	
5116	450	450			450	450	450	450						450	450	450	450		450			450						450	

Many hangers are specially packaged for a particular rail; however, any hanger in this table can be used with any rail in this table for doors up to 450 lbs.



Hardware  
Makers  
Since 1901

National Manufacturing Company Sterling, Illinois 61081